



ORGANISATIONAL (VO) PROFILE

2010 – 2022

SANJIVAN GOPALKRUSHAN SANSTHA

At. Masala. Post. Shiva, Th. Katol, Dist. Nagpur – 441123

Maharashtra – INDIA

Table of Contents.....

Contents	Page Number
Director's Message	3
Abbreviations Used	4
Organization at a glance	5
Vision, Mission and Goal	6
Objectives	6
Values	7
Brief on SGS	7
Location and Accessibility	8
Executive function	8
Staff and Functions	8 – 9
Human Resources of SGS	9
Thematic Areas	9
Strategies Adopted by SGS	9 – 10
Governance and Management	10
Executive Committee	11
Organogram	12
Current Geographical area	13
About Nagpur	13
Projects implemented	14
Current Projects	15
Budget and Finance	18
Income Projection	18
Our partners	18
Future thrusts	19 – 22

Director's Message.....



I wish to present to you a brief profile of our organization, Sanjivan Gopalkrushana Sanstha. SGS is situated in Masala, Nagpur district of Maharashtra. The organization is a professionally managed and committed NGO active in Capacity building and issue based networking. The primary focus is on the problems of the underprivileged and vulnerable rural poor in their struggle to obtain a life of justice and dignity. Access to services such as education, health, food security, sustainable livelihood and the empowerment of women, adolescents, youth, PLHAs and PWDs for self-governance is embedded in our mission.

SGS has been working since its inception in creating awareness in sickle cell, Woman, child and HIV & AIDS, child rights.

Since 1996, our main interventions have been a implementing in Ashram School and Development of projects in Nagpur district especially residential and Nonresidential Ashram School, masala and reversing the spread of the disease among student, mothers and backward peoples.

Currently we are networking with other NGOs for promoting child rights through SSA. We are building our capacities through various trainings conducted by the organizations SWO and Maharashtra Government and looking forward to work directly with PWDs for their inclusion in the society enabling them to live a life of dignity, and above all our efforts and resolve to halt and reverse health in Nagpur remains firm.

Mr. Chandrashekhar Bhondwe, Director

Abbreviations used

AIDS	All Immune Deficiency Syndrome
ACSM	Advocacy, Communication and Social Mobilization
CBR	Community based rehabilitation
ART	Anti retro viral therapy
ANC	Ante Natal Care
BPA	Blind People's Association
DPO	Disabled People's Organization
DOTs	Directly Observed Treatment (short course)
HIV	Human Immuno Virus
ICTC	Integrated Counseling and Testing Center
SGS	Sanjivan Gopalkrushana Sanstha
MCCLF	Movement for the Creation of Child Labor Free zones
NGO	Non-Government Organization
PMTCT	Prevention of Mother-to-child Transmission
PWD	Person with Disability
PLHIV	Person living with HIV
RNTCP	Revised National TB Control Program
STD	Sexually Transmitted Disease
SSA	Sarva Shiksha Abhiyan
SHG	Self Help Group
VO	Voluntary Organization

The organization at a glance.....

1	Name of the Organization	SANJIVAN GOPALKRUSHANA SANSTHA
2	Acronym	SGS
3	Domain	Maharashtra
4	Registered Address	At. Masala. Post. Shiva, Th. Katol, Dist. Nagpur – 441 123
5	Correspondence Address	C/o Manohar Choudhary, Tilak Nagar, Main Road Chawdi Chouk, Kamptee, Dist. Nagpur – 441 001 (Maharashtra)
6	Contact Number	07112 – 258503
7	Fax Number	07112 – 258503
8	Email id	sanjivan4411@gmail.com
9	Chief Functionary	Mr. Chandrashekhar Bhondwe
10	Contact Number	9404086685, 9881132150
11	Bankers	Union Bank Of India, Wadi, Dist. Nagpur
12	A/C operation	Jointly operated by any two signatories from the appointed three dignitaries
13	Our CA	Paliwal & compani, Nagpur

Registration Details

Act under which registered	Date of Registration	Place of Registration	Registration Number
Society	06/07/1979	Wardha	174/79
BPT 1950	18/09/1979	Wardha	F – 310
12 A		Nagpur	
80 G		Nagpur	
FCRA	22/04/2009	New Delhi	083870221
PAN	06/06/1979	New Delhi	AAITS6027P
NGO Partnership Unique ID	20/12/2009	New Delhi	MH/2009/0022824
NITI Ayog Delhi	/08/2018	New Delhi	MHNG00009887

Vision Statement

To empower and mainstream women and children living in vulnerable, downtrodden and neglected conditions by providing them access to quality education, health and sustainable livelihoods through a rights based approach.

Mission Statement

“For an integrated, healthy, Education and just society through collaborative efforts ’

GOAL:

Expanding to help the underprivileged, vulnerable children and the inclusion of people with different type of disabilities to participate in their development process through participatory gender balanced approaches for ensuring their rights & entitlements

Objectives

The objectives have been drafted after studying the needs of the community in Nagpur district and Vidarbha region of Maharashtra. Following are the needs of the community that are reflected in the objectives:

- Inclusion of the disabled through major interventions and cross-cutting themes
- Empowering women, adolescent girls and youth
- Food security
- Quality education, health and Child rights
- Development of community based leadership
- Promotion of Agriculture and agri-allied activities
- Watershed activities and natural resource management
- Transferring technology to the rural areas
 - To enhance the health status of the rural communities holistically
 - To educate people on sickle cell, malaria, filarial, TB, HIV & AIDS and reduce its impact on the social economic and human development through effective interventions

- To sustain and enhance livelihood security of the economically and socially backward communities
- To empower PWDs through an inclusive development model

Values

SGS has arrived at the following values through twelve years of working with the underprivileged, downtrodden, marginalized and vulnerable sections of our project areas and through consultations with external facilitators and our team members.

- Transparency and Accountability
- Honesty and Integrity
- Collective Cooperation
- Humility, equality, peace, justice and respect for all communities and cultures
- Mutual trust and respect
- Solidarity with the underprivileged and most vulnerable

A brief history of SGS

Sanjivan Gopalkrushana Sanstha (SGS) was established in 1979 as a public trust, registered under the Bombay Public Trust Act 1950 and under Societies registration Act XXI 1860. Initially good health for the family and education for all children was its main focus. The organization would conduct health camps and distribute medicines free of cost to the most economically backward members of the society through local contributions.

The growing trend of Ashram School in Nagpur district became a cause of great concern. Most of the people with whom the organization interacted were unaware of Ashram school. All their knowledge was surrounded by myths and misconceptions. Therefore before implementing any major programs, mass awareness of the virus was of vital importance.

The organization undertook many IEC programs to generate awareness about HIV-AIDS in selected villages of almost all the blocks of Nagpur district to slow down the infection from high risk groups to the general population by mobilizing people to change sexual behavioral patterns.

In the 12 years of its existence, SGS has grown from a small team of motivated and committed social activists to a large group of professionals with multi-dimensional skills. The entire team is committed to the need of sustainability and thus initiates actions for organizing the people to ensure their participation in collective decision-making process. It

also makes efforts to develop collective leadership so that the local people can lead the public institutions in a democratic way to further the cause of development of the areas.

At Present SGS works in the entire city of Nagpur rural and urban.

Location and Accessibility

The headquarters of SGS is located at Masala, Nagpur rural, on the Nagpur – Amravati highway. The district is well connected by roads and railway (broad & narrow). The nearest airport is Nagpur (14 km) and so is the railway station (12 km).

Executive Function

The Executive Director is responsible for all the activities of SGS including its administration. He provides the leadership within the local community and identifies emerging issues of district and state level significance for the attention of state, non-state actors and other partner organizations. The office of the Director coordinates an extensive schedule of appointments and visits with purpose of raising awareness about the importance of livelihoods for the development and empowerment of the rural masses. The Director is assisted in the performance of his functions by the Secretary and Treasurer who advises and coordinates on substantive matters and assists in strategic planning and development of management tools and instruments to enhance the organization's performance in its overall mission.

The Staff and their functions

The staff is directly responsible for coordinating, implementing and monitoring the interventions and activities earmarked for support by the donors. Monthly review meetings are held of the staff by the Director. He takes the review of the last meeting and discusses the present situation, gaps, resources required and the planning for the next month is finalized as per the indicators. The head office consists of professionals in the fields of advocacy, lobbying and networking, watershed promoters, health, education, livelihood, social mobilization and so on, besides monitoring, management of finance and administration. The work on the field is coordinated by Project Managers. Monthly technical reports (MTRs) are prepared by the field teams and consolidated into a

comprehensive report monitored by the project manager. Quarterly, half-yearly and annual reports are prepared on a routine basis. Detailed analyses related to the results, targets, objectives and achievements are undertaken. Though such assessments are difficult to follow given the time constraints, however monitoring indicators to qualify results and processes have been set up in place.

Human Resources Available

Staff	PMTCT Program	Primary Ashram School	Madhymic Ashram School	Total
Female	04	5	1	10
Male	03	06	04	13
Total	7	11	5	23

Distribution of staff as per salary levels

Slab of Gross salary (in Rs.) Plus benefits paid to staff	TOTAL		
	male	female	Total
< 5000	1	8	9
5000 – 10000	3	1	4
10000 – 40000	8	4	12
TOTAL	12	13	25

Thematic Areas

- ❖ Empowering women, adolescent girls, boys and youth
- ❖ Initiated process for the inclusion of disabled persons
- ❖ Capacity building of all stakeholders through various trainings
- ❖ Poverty reduction
- ❖ Social Sector Development
- ❖ Quality education and health facilities, School hygiene and adequate infrastructure

Strategies

- Strengthen the organization by building the capacities of its members, staff and all stakeholders
- Generate awareness on the rights, self-reliance and self-esteem for improving economic conditions of stakeholders through street plays, puppet shows, IEC distribution etc
- Develop critical thinking in the communities
- Utilization of local resources, local knowledge and skills
- Mobilizing women to participate for uplifting their social, economic and political development
- Promoting traditional agricultural practices (collective, mixed and cooperative farming)
- Gender sensitization
- Social mobilization, advocacy and lobbying
- Conduct baseline surveys, needs assessment, participatory rural appraisal
- Coordinating, linkages & Networking
- Participating in forums, seminars, workshops
- Formation of SHGs and DPO's
- Documenting and reporting

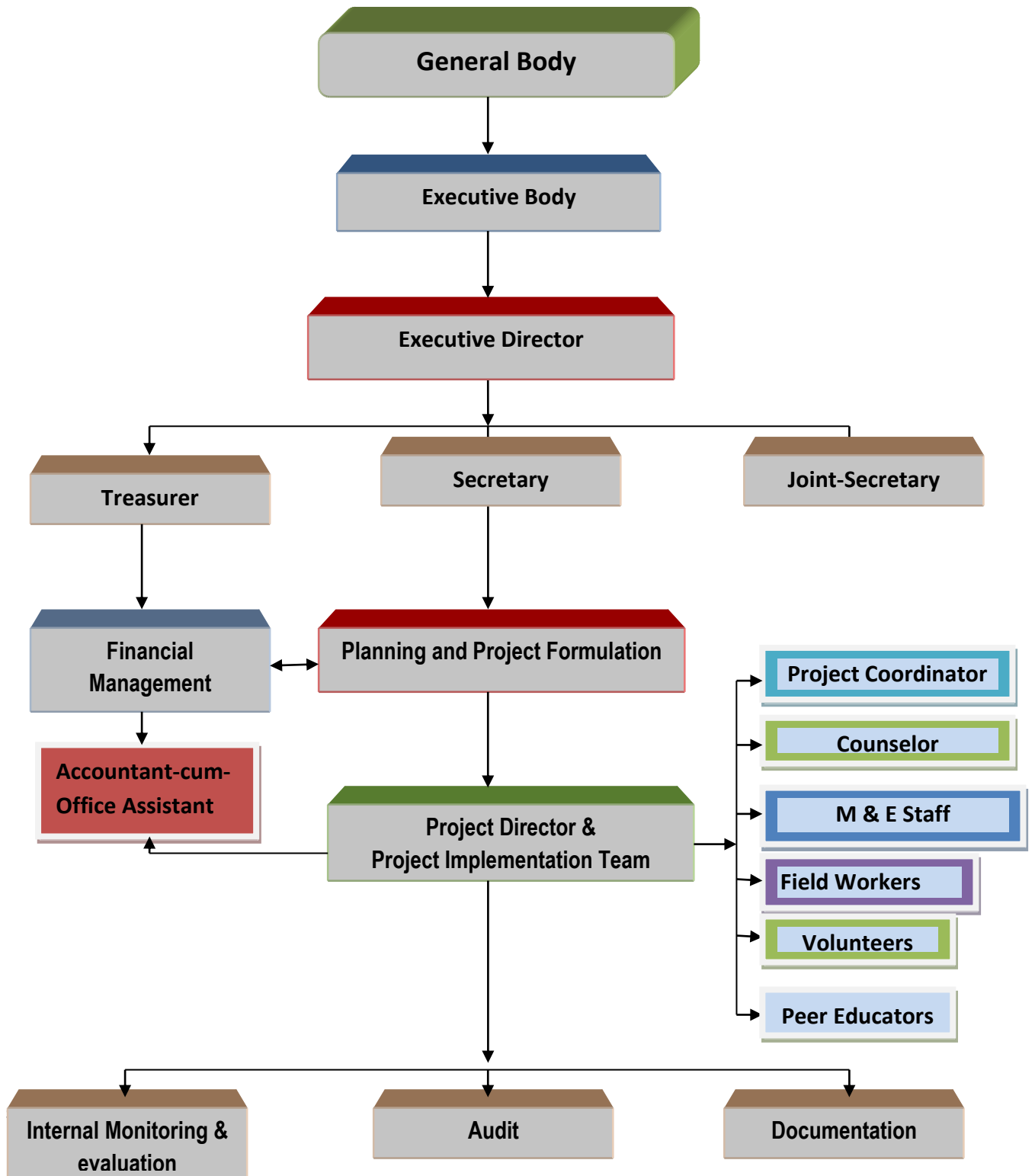
Governance & Management

The General Body is the apex policy making committee of SGS. It meets 1 time in a year. The Executive Body is elected by the General Body for a period of five years. The executive body consists of 7 members. It holds its meetings four times in a year. Monthly review meetings are held at the organization headquarters with the project staff, Director, secretary and treasurer. The Management is completely participatory and the level of decision-making is decentralized.

Executive Committee

#	Name	Position	Age	Relationship with office bearers, if any	Qualification	Contact
1	Chandrashekhar N Bhondwe	President	42	None	BSW, MA, B. Ed, B.P.Ed.	09404086685
2	Naresh S. Dudhakaure	Vice-President	55	None	BA, B Ed	
3	Pravin Bhondwe	Secretary	30	None	B P E.	9881132150
4	Nisha M Choudhary	Joint-Secretary	36	None	B F A, D. P. Ed	09021488655
5	Indutai Bhondwe	Treasurer	58	None	12 th	9158627851
6	Premlata R Kohale	Member	38	None	BA. D.Ed	09960505040
7	Vinayk S. Nagose	Member	50	None	12 th	

ORGANOGRAM



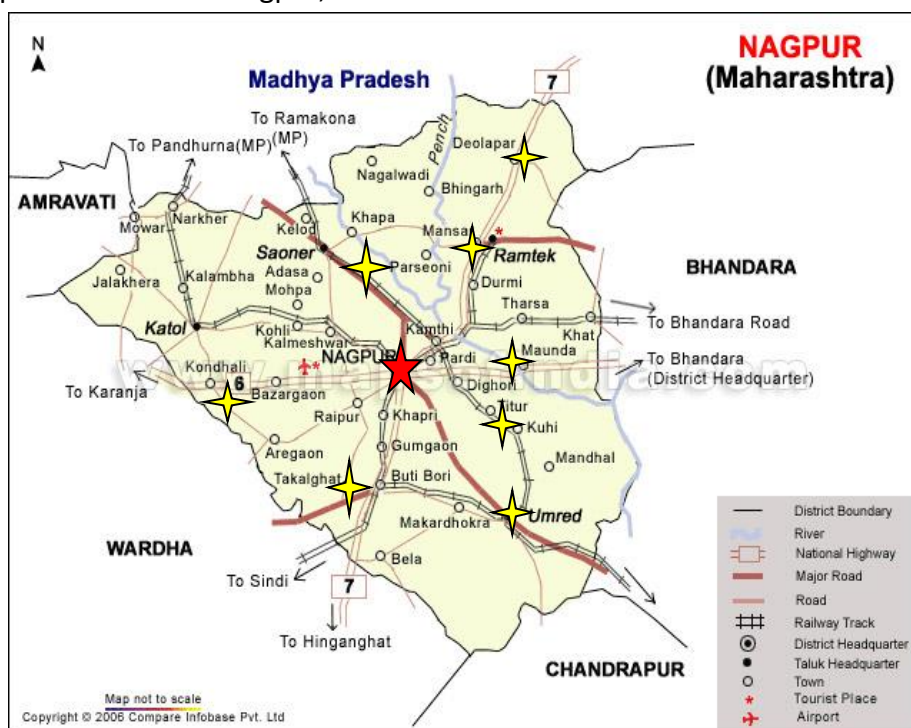
Current Geographical Area

#	District	Block	No. of Villages	Total Population 2009	Total Outreach
1	Nagpur	Ramtek [SDH]	157	98,446	68910
2		Umrer [RH]	140	1,80,754	126527
3		Kuhi [RH]	186	1,77,100	123970
4		Bhivapur [RH]	106	1,04,736	73315
5		Deolapar [RH]	76	76,757	53729
6		Parseoni [RH]	115	1,16,500	81550
7		Mauda [RH]	124	1,34,137	93895
8		Takalghat [PHC]	36	32,000	21000
9	Nagpur Urban	Sites	27	20,00,000	250000
10		Kondhali [RH]	38	1,33,000	10000
Total			857	29,20,430	8,92,896

Map of Nagpur District

Vidarbha region is made up of 11 districts. Nagpur, one of the districts consists of 14 blocks.

SGS is situated in Dattawadi block of Nagpur district. As per Census India 2001, Nagpur had a population of 40,67,637. Nagpur district has 14 blocks. Nagpur is the second capital of Maharashtra and the 13th largest urban conglomerate in India. It is bounded on the north by MP districts of Chhindwara & Seoni, on the east by Bhandara, south by Chandrapur, west by Wardha and on the north-west by a small strip of Amravati. Nagpur has an area of 3840 Square meters. It is divided into 14 Tehsils.



Projects implemented

#	Year	Block/Sites	Program	Supporting Partner	Nature of Program
1	Nov. 2008	8	PPTCT		Motivating ANCs to go in for voluntary HIV Counseling & Testing Conduct meetings with SHGs to sensitize them about HIV-AIDS patients and their role in preventive measures Conduct house-to-house visits
2	April 2009	6	CHAI		Identification of children infected and affected with HIV-AIDS Referrals for HIV testing, ART and CD4 testing Nutritional & educational Support
3	Dec. 2010	27	FSW		Identification of street based female sex workers Condom & IEC distribution STI identification, counseling, referral, treatment & screening for Syphilis PLHA identification Advocacy & Networking
4	July 2011	10	HIV-TB		Strengthening referral services of chest symptomatic HRG in community, prevent transmission and control the spread of HIV-TB Launching an intensive campaign about the preventive aspects of TB-HIV infection in community by participation of youth, community leaders & private medical practitioners Supporting DOTs centers and undertake follow-up activities of HIV-TB co-infected patients

ON GOING PROJECTS

Education

Adiwasi Gowari Shahid Smriti Primary Ashram School Masala,

This ashram running by a 1996 is granted by Gov. of Maharashtra. It is facilitated by a Sanjivan Gopalkrushana Sanstha, Masala, in this school location in rural areas. The admission is by the student in residential and nonresidential school and ranging by 1 to 7th class boys and girls. In this school arrangement will establish building in school and Hostel boys and girls is spread and well education staff as school and hostels.

Madhyic Ashram School Masala,

This ashram running by a 2008 is granted by Gov. of Maharashtra. It is facilitated by a Sanjivan Gopalkrushana Sanstha, Masala, in this school location in rural areas. The admission is by the student in residential and nonresidential school and ranging by 8 to 10th class boys and girls. In this school arrangement will establish building in school and Hostel boys and girls is spread and well education staff as school and hostels.

1.1 ADMINISTRATOR

- To create a course, by providing the course title and description.
- To approve faculty members for a Course.
- To maintain the details of faculty members and student of a Course.
- To view all the students and faculty members.
- To view and publish announcements regarding course.
- To view discussion board.
- To view the course content.
- Scheduling the work.
- Receiving the Feedbacks.

1.2 FACULTY

- To view their profile.
- To view their salary details.
- To view all the students of a course.
- Providing the course content to the students.
- To view the course content.
- To create course announcements.
- To view discussion board.
- Conducting tests of multiple choice questions to the students of a course.
- To maintain exam key and exam result.

Health

Prevention of mother-to-child transmission of HIV & AIDS

The goal of the project is to mitigate the transmission of HIV/AIDS from mother-to-child by strengthening and expanding care and support models (including access to treatment) and in doing so, improve the quality of life and uphold the rights of women and children. The project is being implemented in 8 ICTCs of Nagpur district. Since January 2010, the project is supported by ILFS. Earlier MSACS was the supporting agency.

Axshya (April 2010 – March 2013)

This is a TB care and control program in India. Axshya means 'free of TB'. The focus is on ACSM, towards access to TB care. It aims to improve access to quality TB care and control through NGO and donor partnership. MVBGSS works in Nagpur with the support of MAMTA & Alliance India. The program supports RNTCP to expand its reach, visibility and effectiveness covering a range of activities to empower communities on TB control – advocate for political and administration support, involve all health care providers to increase the reach of TB services, ensure rational use of drugs and diagnostics and train on areas of national priority.

CBO's functioning

#	Type	Number of committees
1	SHGs	01
2	Child Parliament	01

Our Networks

- GVS through Gramin Vikas Society, Nagpur
- MSS, Mahakali Shikashan Sanstha, Wardha.

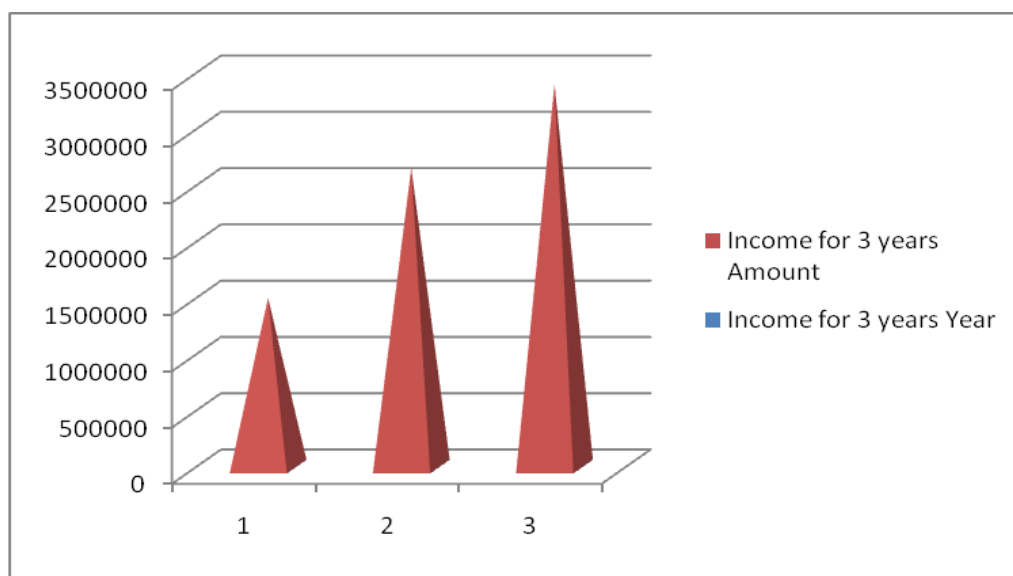
Infrastructure available

#	Asset Name	Quantity	Measurement	Value
1	Computer	1	28200	28200
2	Printer	1	7650	7650
3	Pen drive	1	1450	1450
4	UPS	1	2800	2800
5	Inverter	1	15500	15500
6	Tables	6	3717	22302
7	Teakwood table	1	3200	3200
8	Plastic Chairs	19	330	6270
9	Revolving Chairs	3	1650	4950
10	TV	1	7000	7000
11	DVD Player	1	3000	3000
12	Camera	1	10200	10200
13	Wood Rack	1	7600	7600
14	Steel Cupboard	2	3200	6400
15	Steel Rack	1	5200	5200
16	Cooler	1	4200	4200
Total				1,35,922

Budgeting and Finance

The core project team prepares the project budget. After finalization, the budget is shared with the entire project team by convening a meeting. Budgeting is a part of the organization's planning exercise. Reviewing of financial progress against budget is done on a monthly, quarterly and half-yearly basis. The occurrence of financial variances is discussed in the monthly meeting and corrective steps are taken to avoid further deviations and improve staff performance. An amount of more than Rs. 1000/- is paid by cheque. A financial report is submitted on a monthly basis to the partner and a full project financial report with audited statements of expenditure is prepared at the end of the project. SGS maintains a manual and computerized accounting system and follows standard accounting practices. A full time accountant is in-charge of the financial functions of the organization.

Income projection of the financial years 2010 – 2022



Our Supporters

- IL & FS, Pune
- MSACS, Mumbai
- Social welfare Board, Mumbai

Future Thrusts

All Disabilities

Our future thrust is to work directly with children and persons with all types of disabilities as partners for their social and economic development. By ensuring human rights, our long-term aim is to enable parent-led advisory groups at village and block levels to influence policy and decision-making on issues concerning persons with disabilities.

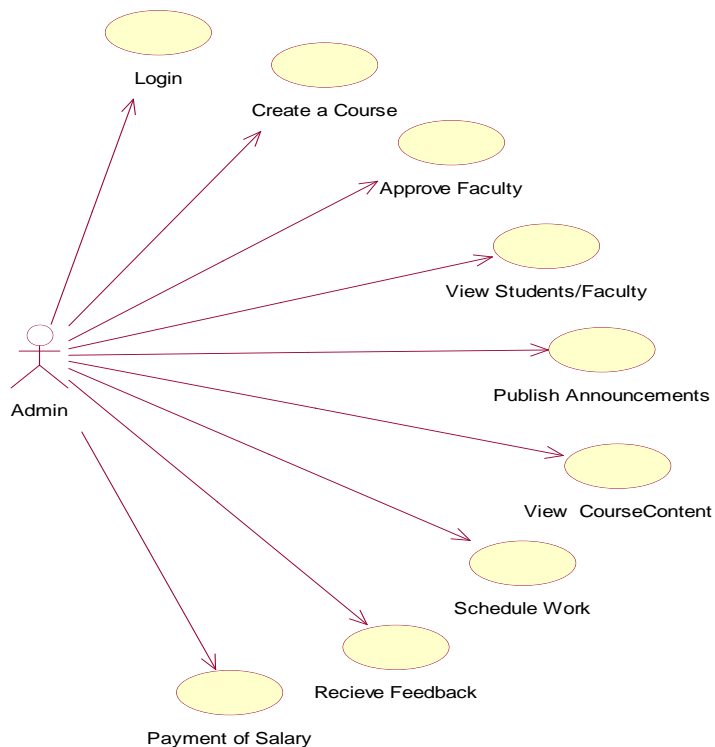
- Formation of DPOs

Sickle cell

Sickle cell or sickle cell anemia is a genetic life-long blood disorder characterized by red blood cells that assume abnormal, rigid, sickle shape. The sickling occurs because of a mutation in the hemoglobin gene. Life expectancy is shortened. Due to a combination of societal attitudes, varying belief systems and governmental neglect, tribal populations throughout India have long been denied basic health care. This has resulted in gaping disparities in health status of tribal, which are evident. We have identified the following activities:

- Awareness generation about the importance of vaccination in childhood and about adequate oral intake of fluids with electrolytes
- Pre-marital counseling
- Pre-natal diagnosis

1.1 USECASE FOR ADMINISTRATOR ASHRAM SCHOOL EDUCATION



Child Rights

The Indian Constitution and later the UN convention on children has listed a large number of rights of children for their overall development. In addition, there are several legislations for the welfare of the children. But, most of these rights are violated, sometimes due to ignorance about the existence of such rights and at times for the selfish gains of the violators. In order to mainstream vulnerable children we have identified the following activities:

- Formation of child Rights Protection Forum
- Conducting bridge courses for children in the age group of 8 -17 years
- Life skills education for adolescents
- Building processes to totally eliminate child labor by providing children up to 14 years of age formal, full-time and quality education

It has been planned to start a hospital with a capacity of 15 beds at Masala. It will provide rehabilitation for poor people of all ages. It will also provide services to PWDs to increase their quality of life and independence.

Awareness Campaigns against female foeticide

Foetal homicide is as reprehensible a practice as other forms of violence against women. It is an issue closely related to violation of not just women rights but more importantly, of human rights. It is a shame for any progressive nation that a male child is given preference to a female child and consequently lives are literally nipped in the bud in front of the wide open eyes of an indifferent society. NGOs and progressive-minded human beings can play a key role raising our voices and educating the public about these unborn victims of violence.

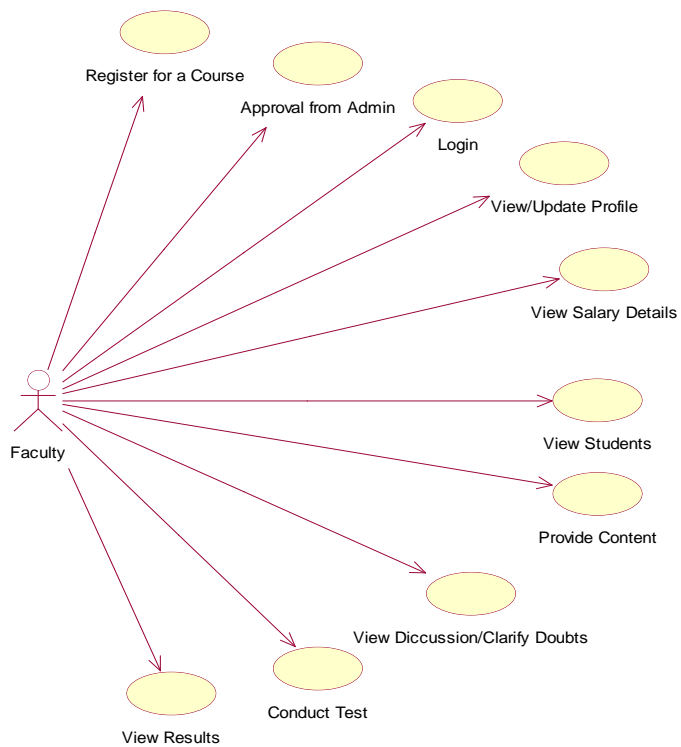
Computer Institute

Compute techniques are being widely covered for meeting the changing technology needs of mankind. In recent years it has been gaining attraction globally. The Director of SGS being a Computer in Technology and science practitioner, envisages to establish a computer center for preventing and managing technical induced and other, keeping in view the time-tested benefits being high beneficial economically. It is felt that computer facility should be made available to more and more people at the grassroots level.

1 CONCLUSION

Normally conventional system we use maximum manual applications. It consumes lots of time and paper. But this system totally Web based, it means that student can enter into the system very easily. They can view the details of the colleges affiliated under JNTU University and their contact information. This system is totally user friendly and timesaving and cost effective system. All the modules are designed in a way that a layman can understand the system very easily. Student /college can reach the place where they want to reach in a very minimum amount of time.

1.1 USECASE FOR FACULTY



Future enhancements:

- The complete project is to be web-based
- The student can view Results and assessment details online.
- All the services are provided in online
- College / Student user access the system staying anywhere

Place: Masala, Nagpur – 23

Presented by: Mr. Chandrashekhar Bhondwe, Director, SGS, Masala, Dist. Nagpur

Dated: April - 2013